

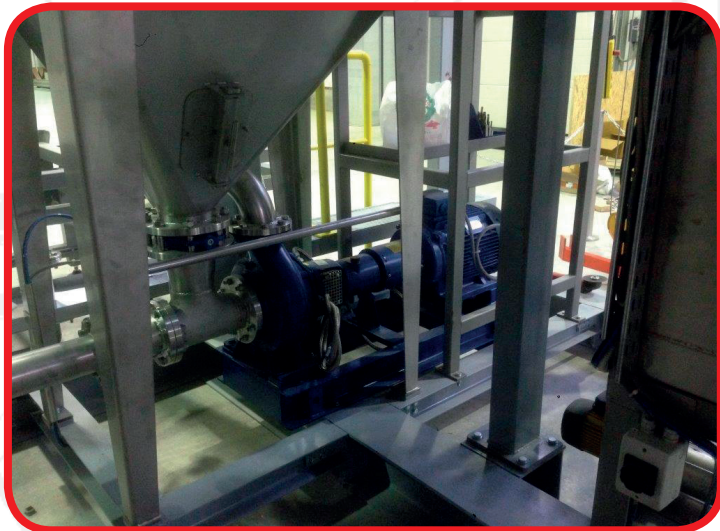


Chemical Transfer Pump

RC - Chemical Industry

Chemical Industry

A chemical plant is an industrial process plant that manufactures chemicals, usually on a large scale. A chemical plant commonly has large vessels or sections called units or lines that are interconnected by piping which can carry streams of material. Such material streams can include fluids (gas or liquid carried in piping), sometimes solids or mixtures such as slurries.



Application : Chemical Transfer Pump

CHEMICAL TRANSFER PUMPS
PUMP: RCB 100-25A 4C22 C140 3
PERFORMANCE: Flow 151 m³/h – head 22 m
LIQUID: MEYCO 160 - viscosity 120 cP -s.g. 1,26

RC vortex impeller can pump liquid with a suspension of small solid particles without clogging problems. Back-to-back seal arrangement allows the seals to work always in contact with clean liquids. Pumped liquid MEYCO SA160 is an high performance, alkali-free set accelerator for use in both wet and dry mix spraying processes

RC SERIES

Impeller type: **vortex**.
Discharge sizes: **from DN 32 to DN 250**.
Maximum working pressure: **10 bar**
Flow rate: **up to 800 m³ /hr**.
Differential head: **up to 60 m**.
Large free passage clearance up to 150 mm due to the completely recessed impeller.
Heavy duty shaft and bearings.

